

CerStrong®

CERAMIC PANELS FOR BALUSTRADES *faraone*



The first balustrade embellished with a Laminam finish that combines the total safety of NINFA® while passing the tests required by regulations.



REGISTERED DESIGN

CerStrong® FOR NINFA®



Ninfa 176 internal low wall with Cerstrong triple slab panel with antracite effect and bianco calce finish.
Residential balcony.

REGISTERED DESIGN

CerStrong® FOR NINFA®

A TRUSTED PARTNER FOR YOUR PROJECT

The first Faraone balustrade with patented and certified Laminam ceramic



THE STRENGTH OF NINFA® AND THE ELEGANCE OF LAMINAM FINISHES

Give your project character in full safety



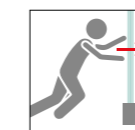
The innovative NINFA® balustrade line with CerStrong® combines Faraone's glass balustrade systems with Laminam's surface technology, allowing great design freedom with products that meet the highest standards of quality and safety.

The ceramic slab combines with safety glass for a new technology.

TECHNICAL SPECIFICATIONS:

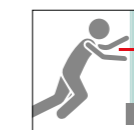
- CerStrong® triple slab thickness: approx. 25 mm (1")
- CerStrong® double slab thickness: approx. 19 mm (0.75")

PATENTED AND CERTIFIED SYSTEM



200 kg/m (tested at 300 kg/m)
for Class C2

137 lb/ft (tested at 206 lb/ft)



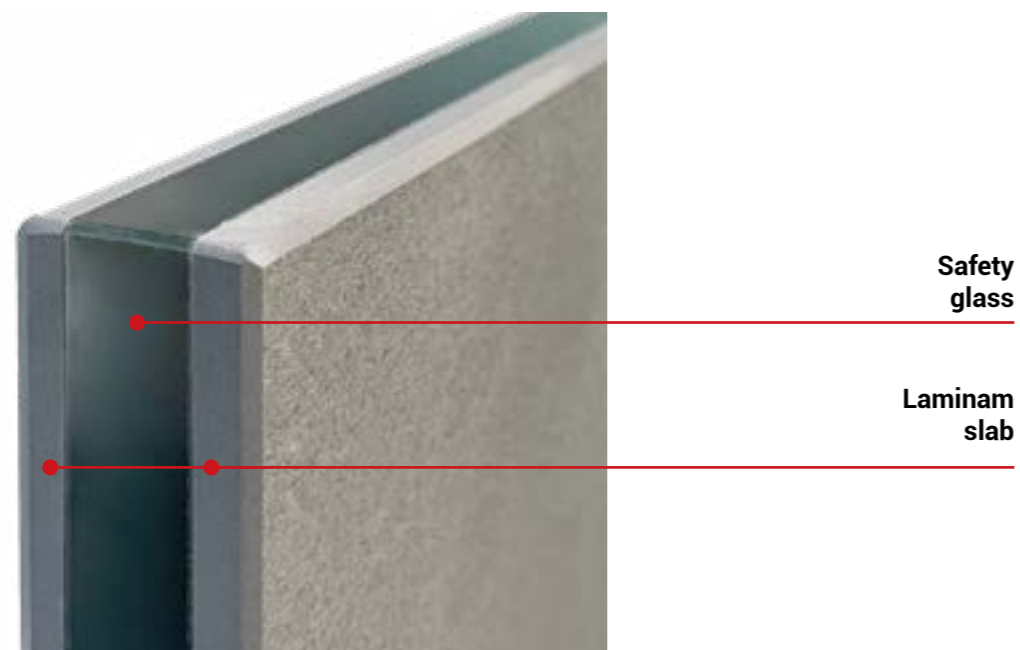
300 kg/m (tested at 450 kg/m)
for Class C3

206 lb/ft (tested at 302 lb/ft)

The images and drawings in this catalogue are purely illustrative.
Please contact us directly for any technical information.

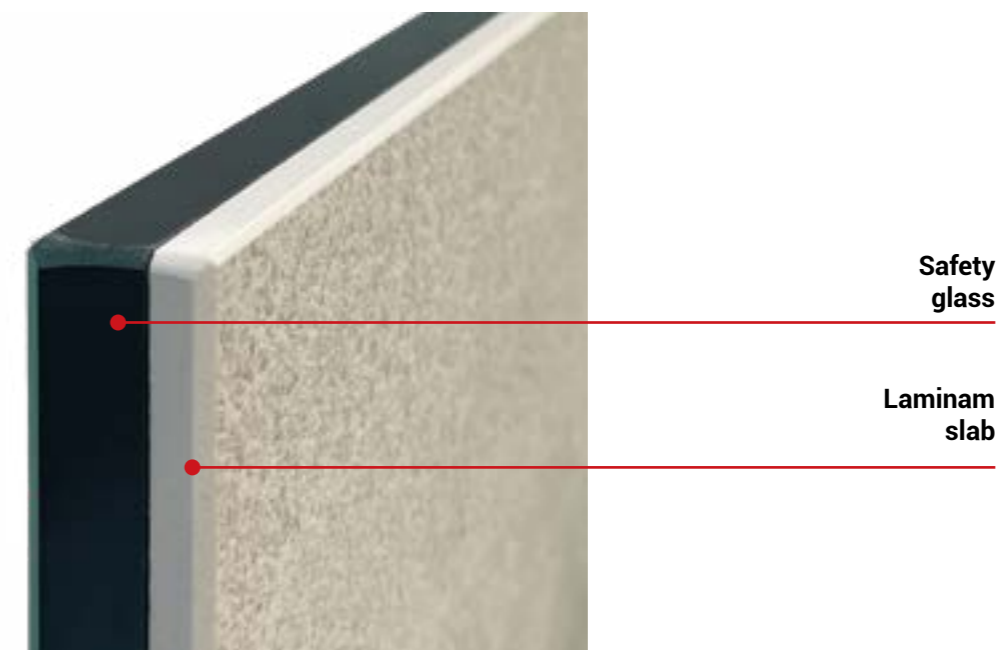
TRIPLE SLAB BALUSTRADE

(Laminam slab+Glass+Laminam slab)



DOUBLE SLAB BALUSTRADE

(Glass+Laminam slab)



Triple slab laboratory test

- Laminated tempered glass with EVA + Double slab Laminam

MODEL	PANEL SIZE	THICKNESS	CATEGORY
Ninfa 6	1000x h.1200 mm (39,37" x h. 47,24")	Laminam 5 + 0.8 Eva + 12 TEMP + 0.8 Eva + Laminam 5 <i>Laminam 0,20" + 0,03" Eva + 0,47" TEMP + 0,03" Eva + Laminam 0,20"</i>	C3
Ninfa 176	1000x h.1300 mm (39,37" x H 51,18")	Laminam 5 + 0.8 Eva + 12 TEMP + 0.8 Eva + Laminam 5 <i>Laminam 0,20" + 0,03" Eva + 0,47" TEMP + 0,03" Eva + Laminam 0,20"</i>	C2
Ninfa 186	1000x h.1300 mm (39,37" x H 51,18")	Laminam 5 + 0.8 Eva + 12 TEMP + 0.8 Eva + Laminam 5 <i>Laminam 0,20" + 0,03" Eva + 0,47" TEMP + 0,03" Eva + Laminam 0,20"</i>	C2

Double slab laboratory test

- Laminated tempered glass with EVA + Laminam slab

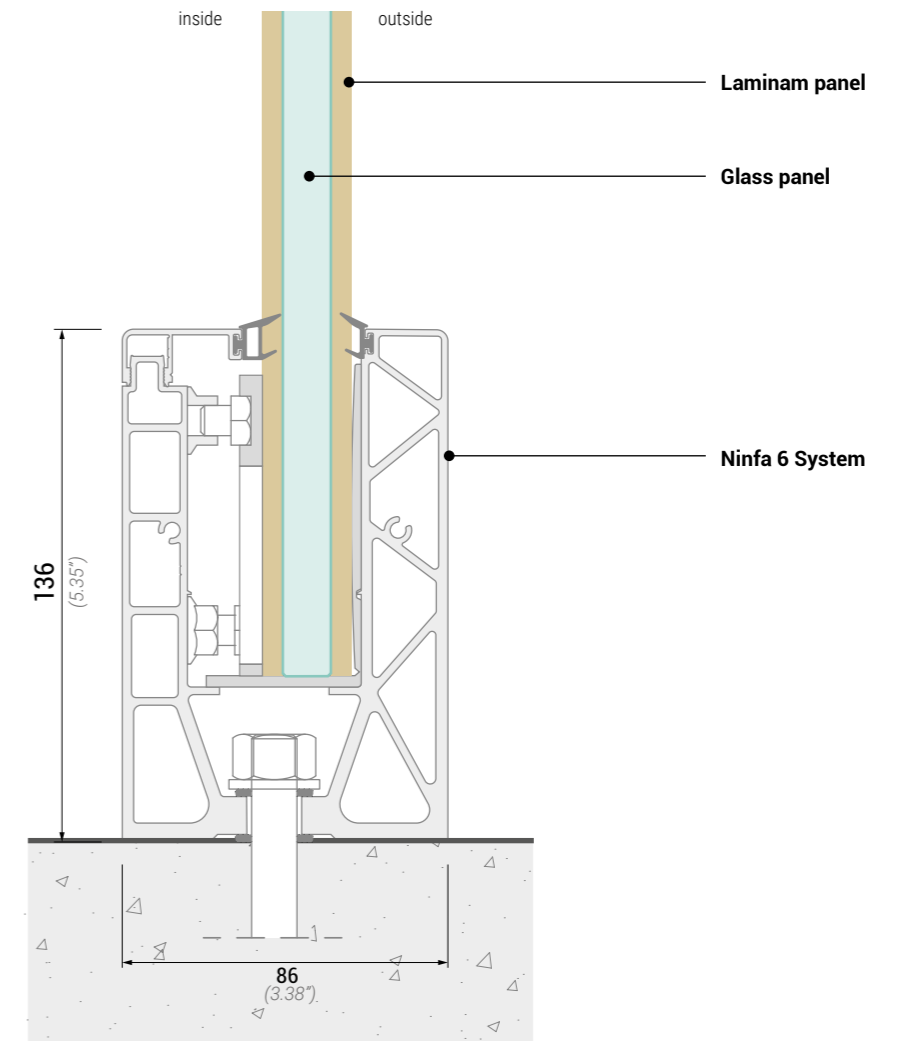
MODEL	PANEL SIZE	THICKNESS	CATEGORY
Ninfa 106	1000X h.1200 mm (39,37" x h. 47,24")	Laminam 5 + 0.8 Eva + 12 TEMP <i>Laminam 0,20" + 0,03" Eva + 0,47" TEMP</i>	C2
Ninfa 116	1000X h.1200 mm (39,37" x h. 47,24")	Laminam 5 + 0.8 Eva + 12 TEMP <i>Laminam 0,20" + 0,03" Eva + 0,47" TEMP</i>	C2
Ninfa 176	1000X h.1200 mm (39,37" x h. 47,24")	Laminam 5 + 0.8 Eva + 12 TEMP <i>Laminam 0,20" + 0,03" Eva + 0,47" TEMP</i>	C2
Ninfa 186	1000X h.1200 mm (39,37" x h. 47,24")	Laminam 5 + 0.8 Eva + 12 TEMP <i>Laminam 0,20" + 0,03" Eva + 0,47" TEMP</i>	C2

1. TRIPLE SLAB SOLUTIONS



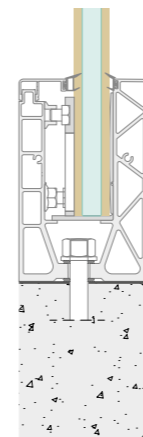
View from the outside.
Example: effetto pietra grey

View from the inside.
Example: effetto pietra grey

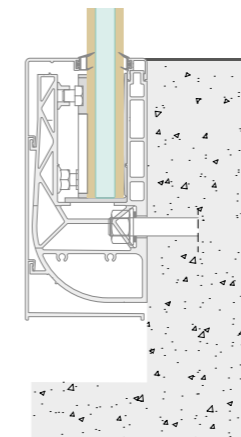


AVAILABLE MODELS

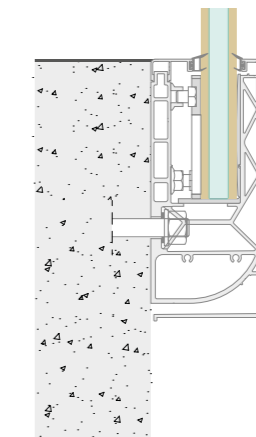
NINFA 6



NINFA 176



NINFA 186



2. DOUBLE SLAB SOLUTIONS



View from the outside.
Example: white lime effect



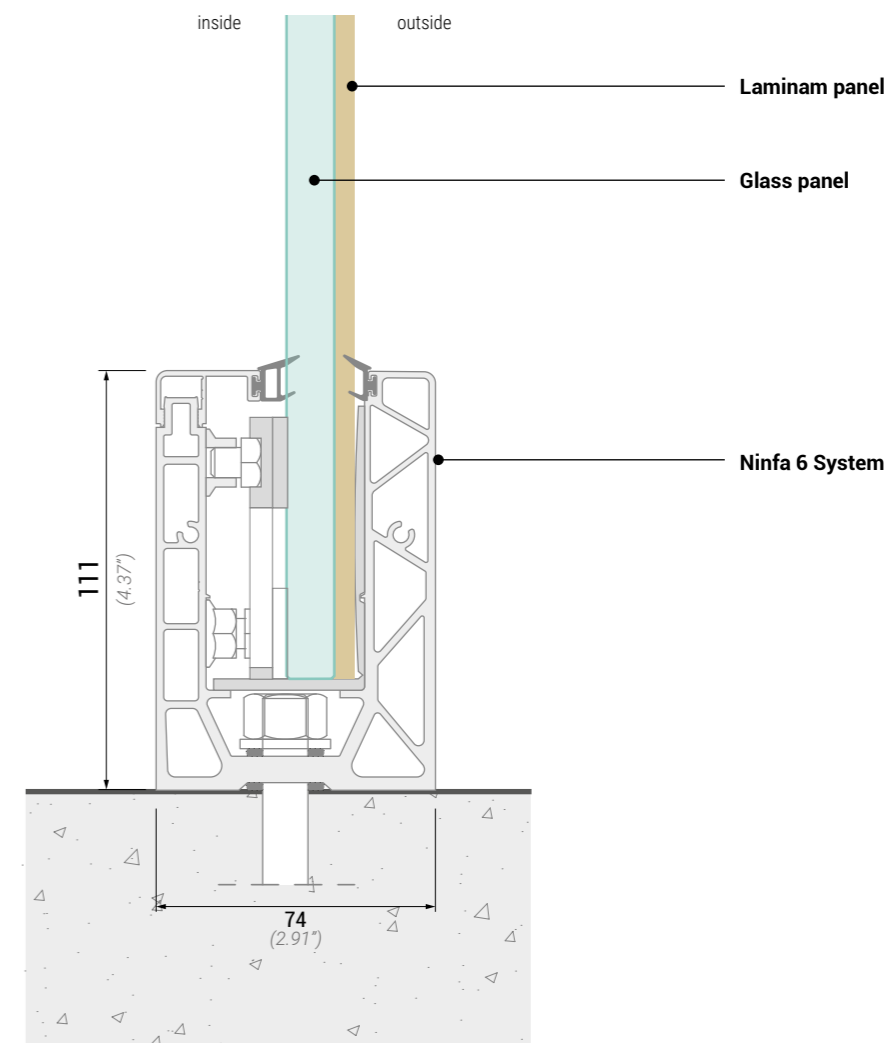
View from the inside.
Example: black effect 9005 opaque (base finish).



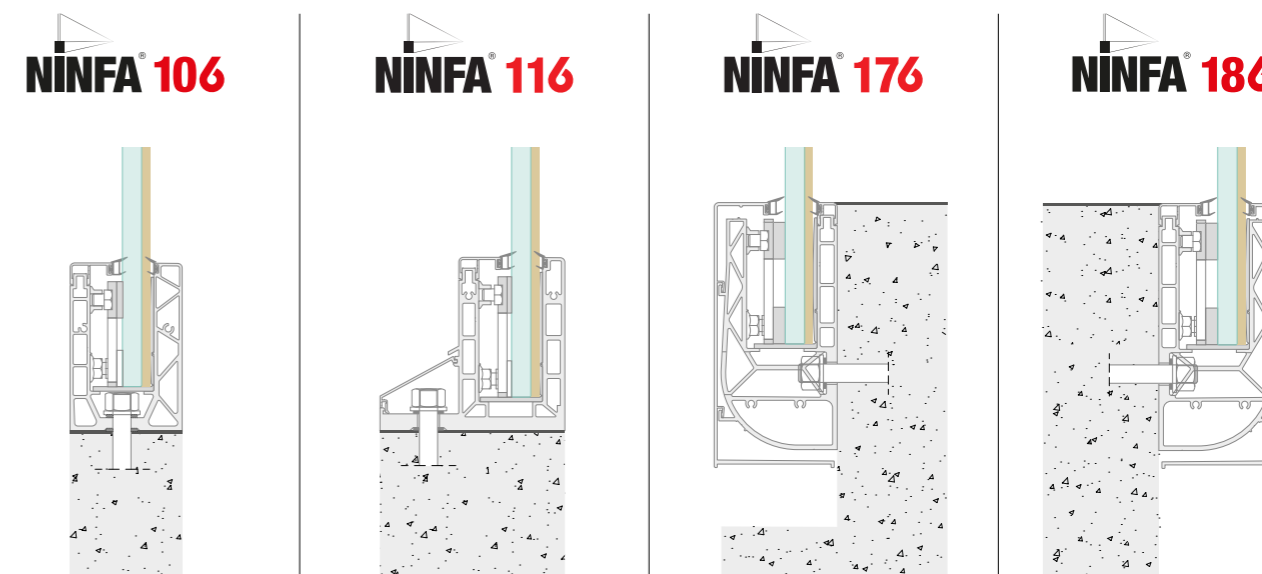
View from the outside.
Example: white statuary veined effect



View from the inside.
Example: pearl white effect 1013 opaque (on request).
(For surcharge, information on the price list)

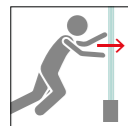


AVAILABLE MODELS



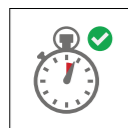
NINFA

OVER 1,550,000 METRES INSTALLED SINCE 2009 TO DATE



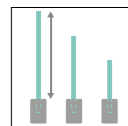
Tests in compliance with regulations

We calculate and test the strength capabilities of Ninfa balustrades according to current regulatory standards.



Assembly speed

Mounting and plumbing the glass is even quicker and easier.



Glass height up to 1300 mm

Look at the performance tables of each product to find out what heights you can achieve with the various balustrades. More than 100 test cycles on the entire NINFA 6-series.



Glass adjustment from inside

Adjustment and alignment of the glass is only done from the inside of the balustrade.



System for private and crowded places

The NINFA CERSTRONG® range of balustrades is a new technology of the highest performance, also ideal for crowded public places.



Cut-to-size option

Send us the drawings of the profiles to be cut and we will execute them with our specially equipped and configured machines for large profiles, guaranteeing both cutting precision and quality.



Design service

Our experts can design the profiles for processing and also the glass data sheets, offering you a complete package.



Customised colours

Colours already available from stock or in short order by choosing from various anodised or RAL finishes.

In this way, the balustrade can be combined with the window frames and integrated into the building.



Shipping

We work with dedicated transporters who load materials directly from our warehouses, ensuring a safe and careful transfer to your company.



Technical-commercial consulting

We have qualified personnel with years of technical and commercial experience who can assist you in solving your problem, from a simple request for a technical drawing to a static check of a particular special fixing to be used.

CERAMICS

ONE SURFACE, MANY PROPERTIES



Easy cleaning and maintenance

Quick and easy surface cleaning with warm water and neutral detergents.



Suitable for both indoor and outdoor use

Exposure to weathering does not damage or alter surfaces.



Resistant to bending

Laminam has a high flexural strength.



Heat-resistant

The ceramic surface does not contain any organic matter, so it withstands high temperatures without surface alteration.



UV-resistant

The Laminam surface remains unaltered when exposed to UV light, retaining its original appearance throughout the life of the product.



Frost-resistant

The ceramic surface withstands temperature drops and the presence of ice.



Stain-resistant

Laminam withstands prolonged contact with major stubborn stains without permanent changes in colour or gloss.



Resistant to thermal shock

Laminam panels resist thermal shock in both indoor and outdoor environments.



Dimensional stability

Laminam does not undergo significant dimensional changes as it has a low coefficient of thermal expansion.



Moisture resistant

Long-term exposure to moisture does not damage the Laminam ceramic surface.



Scratch-resistant and abrasion-resistant

Its properties remain unaltered even after intensive use and frequent cleaning.



Eco-compatibility and recyclability

A natural ceramic, it yields no elements to the environment and can be easily milled and recycled.



Resistant to fungi and mould

Laminam ceramics do not allow the growth of mould, bacteria and fungi.

ALUMINIUM: COLOURS AVAILABLE



Customised profile colours. In addition to the basic finishes, it is possible to choose from more than 2000 RAL colours on request. Complete your design with accessories: aluminium handrails and LEDs for a unique effect.

PROFILE FINISHES: ANODISED

BASE



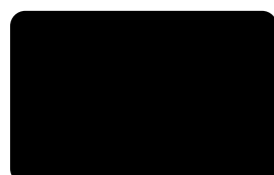
SILVER ANODISED
20 microns

PROFILE FINISHES: RAL AND SPECIAL COATINGS

BASE



WHITE RAL 9010 MATT



BLACK RAL 9005 MATT

ON REQUEST



2000 RAL COLOURS

Illustrative representation of the available finishes.

CERAMICS: COLOUR RANGE



Customise the glass balustrade panels with a selection of ceramic finishes. Bespoke project work.

CERAMIC FINISHES FOR INTERNAL AND EXTERNAL PANELS (SIZE: W 1600 x H 1300)



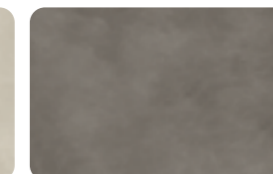
CALCE BIANCO
Laminam



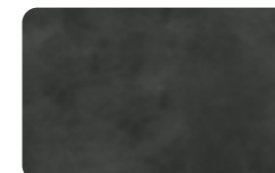
NOIR DESIRE
Laminam



CALCE GRIGIO
Laminam



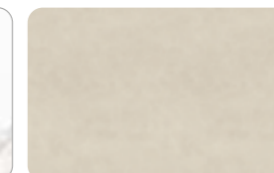
CALCE ANTRACITE
Laminam



CALCE NERO
Laminam



CALACATTA ORO VENATO
Laminam



FOKOS SALE
Laminam



FOKOS TERRA
Laminam



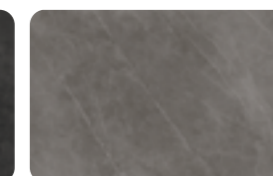
CALACATTA BLACK
Laminam



BIANCO STATUARIO VENATO
Laminam



FOKOS GRAFITE
Laminam



PIETRA GREY
Laminam



Discover all the other finishes available on request

Illustrative representation of the available finishes.

LAMINAM SURFACES: QUALITY AND SUSTAINABILITY



Sustainable design

Sustainability is at the heart of Laminam's corporate vision, which integrates research and innovation with economic, social and environmental responsibility. Through state-of-the-art technologies and the use of natural raw materials, Laminam creates design solutions where beauty and sustainability coexist. Every stage of the process, from product to supply chain relations, is geared towards minimising environmental impact.



Solar energy and sustainable systems

The commitment to more sustainable production is embodied in the expansion of the photovoltaic park in Fiorano (Mo), which provides solar energy for the three electric ovens, unique in the ceramic industry. Laminam continuously invests in technologies to reduce emissions, using regenerable activated carbon and innovative abatement systems, ensuring a reduced environmental impact.



Sustainability in the supply chain

Laminam has achieved ISO 20400 certification for sustainable procurement, working with suppliers to reduce the carbon footprint and promote respect for human rights, labour standards and environmental protection. This holistic approach ensures that sustainability is integrated into every aspect of the business.



Innovation in production processes

Among the key objectives is the reduction of energy used in production, with the development of low melting mixtures that allow firing at lower temperatures, improving energy efficiency. Laminam adopts a circular economy model, aiming to reduce waste and safeguard biodiversity.



Environmental certifications

The company has obtained various environmental and product certifications that attest to its commitment to high standards of quality and sustainability, offering products that look to the future with responsibility.



LEED Certificates

Laminam is a member of the Green Building Council Italy, an association aimed at promoting the reduction of the negative impact of buildings and constructions on the environment. It is in this context that the LEED and BREEAM certifications, international schemes aimed at assessing the sustainability of buildings during their entire life cycle, become relevant. Both schemes are based on the awarding of credits in relation to compliance with specific environmental characteristics, such as building materials with a high level of eco-sustainability. Laminam panels used in construction are certified in accordance with ISO 14021 to contain at least 20 to 40 per cent pre-consumer recycled material (i.e. reused industrial waste) and to have a high Solar Reflectance Index (SRI), thus contributing to LEED and BREEAM certification credits.

20% to 60% recycled product

Laminam's activities have always been guided by a commitment to responsibility that means listening and continuous dialogue with stakeholders, reduction of environmental impact through the use of innovative technologies, continuous research into sustainable products from natural raw materials to their complete recyclability. There are many activities that the company has planned with a strategy that looks ahead to 2030: research, investments, certifications, initiatives in favour of employees and the local area.



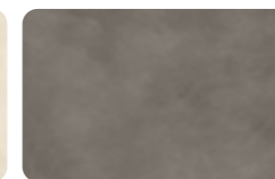
CerStrong® FOR NINFA®



CERSTRONG FINISHES USED IN THIS PROJECT



CALCE BIANCO
Laminam



CALCE ANTRACITE
Laminam

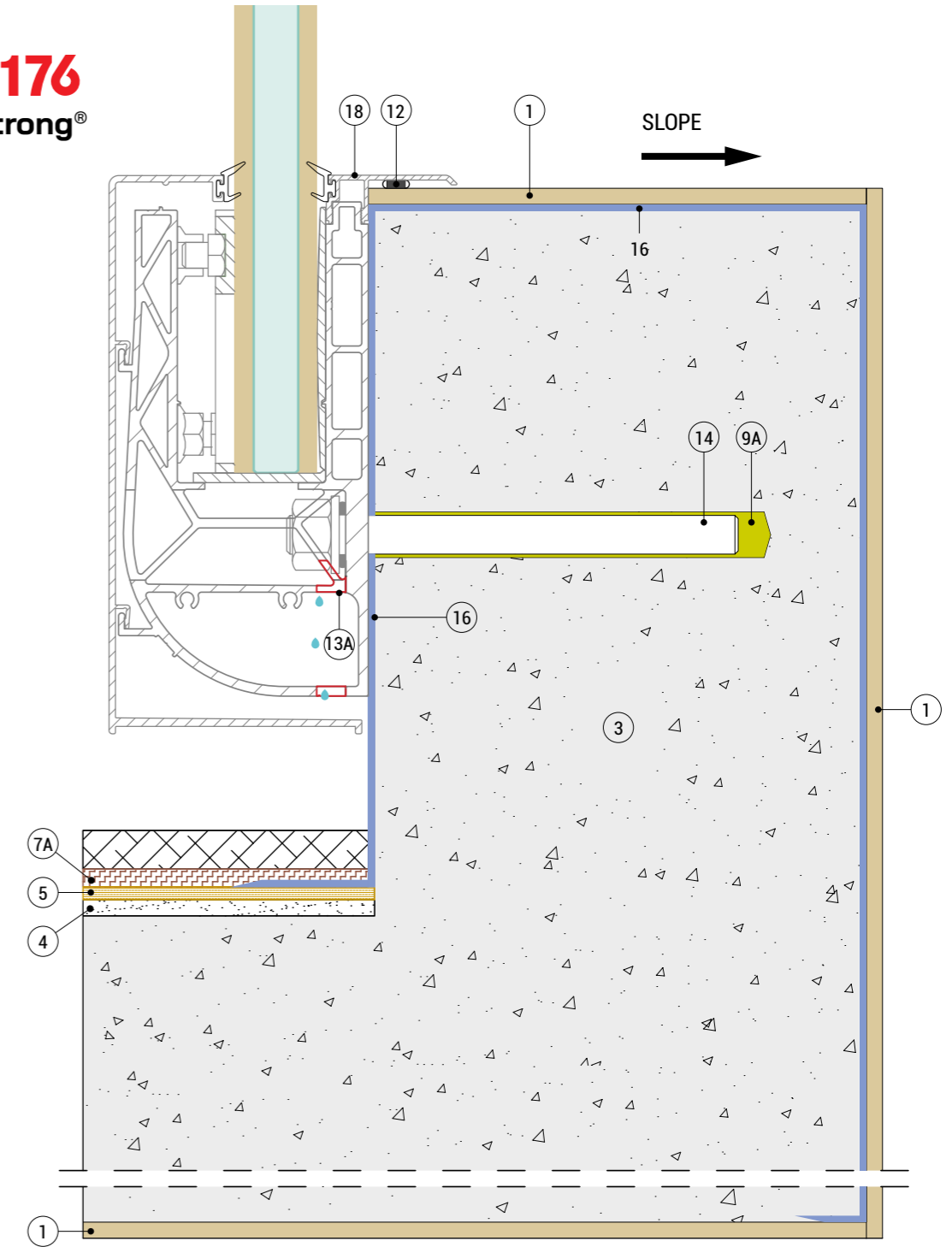




TECHNICAL SOLUTION ADOPTED FOR THIS PROJECT

NINFA[®] 176
with CerStrong[®]

scale:1:2



- 1: Laminam 5 slab** (anthracite and lime white)
- 3: Reinforced concrete**
- 4: Slope layer** as per standard UNI 8178-2 (2019)
- 5: 'Helasta Polyester' waterproofing layer** (Index S.P.A.) single or double layer
- 7A: Underfloor glue type: "Flexbond"** (Index S.p.A.) (or similar)
- 9A: Certified vinylester resin**

- 12: Sealant Type 'Sigilcol'** (Index S.P.A.) (or similar)
- 13A: Vertical, invisible water drain hole** on Ninfa profile
- 14: Threaded rod M12**
- 16: Purlastic flashing type liquid waterproofing panel** (Index S.p.A.)
- 18: Aluminium 'cladding' profile** as coverage and sealing between floor and Ninfa profile



Combine CerStrong panels with glass balustrades to create unique and distinctive facades, enhancing the building's aesthetic and lending it a strong personality.

CUSTOMER CARE

Our experience is at your service.
We guide you in choosing the best solution for your needs.

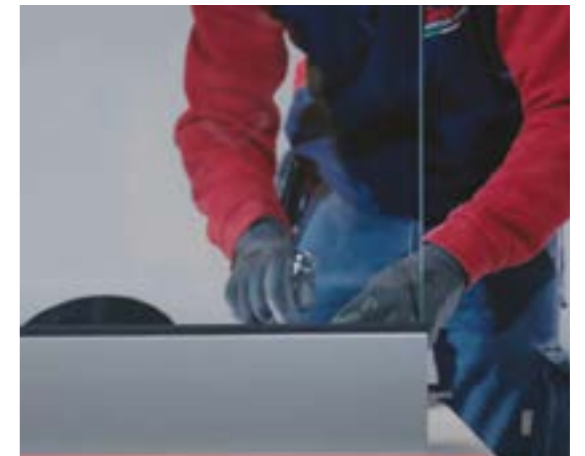
EXPERT GUIDE

To follow a project in all its phases is sometimes very difficult. For this reason, we provide you with a total assistance from technical advice to post-purchase.



INSTALLATION

We carefully select the experts who carry out the installation of our products to ensure our standard of quality. During this phase, tests are carried out on site to ensure that the installation has been performed in a competent manner and that everything is safe.



How you can contact us:

email: faraone@faraone.it

Tel: +39 0861 784200

web: faraone.it



Request information through our website

TECHNICAL SPECIFICATIONS

"Double slab CerStrong panel and profile type NINFA Series 6, (or similar)"

1. MATERIALS AND COMPONENTS:

- Balustrades (Balustrades - Railings), made of extruded aluminium alloy 6063 T66 profiles, Anodised in accordance with the Qualanod mark or Painted with polyester powder in accordance with the Qualicoat mark. The profiles are only positioned at the base of the balustrade. The profile must be suitable to accommodate a ~19 mm (0,75") thick infill panel. The internal geometry of the profiles is specially engineered to provide both the rigidity in the event of static load test and the flexibility required to absorb accidental impacts.
- The accessories: the CerStrong panel mounted with adjustable and suitable accessories for plumbing the panels and clamping them.
- Test certificates: the balustrade must be laboratory tested in accordance with UNI 11678-2017 and in compliance with the purpose, i.e. for Class C2 (137 lb/ft) (residential or similar) or Class C3 (206 lb/ft).

2. FEATURES OF THE 'CerStrong - Double slab' PANEL:

Panel consisting of tempered -laminated glass with an outer panel of LAMINAM, for a total thickness of ~19 mm (0,75").
Description of Laminam: laminated porcelain obtained by wet milling of clayey raw materials, granitic and metamorphic rocks with a feldspathic component and ceramic pigments.
Compacted by special sintering moulding at 1200° with hybrid firing .

3 INSTALLATION POSITIONS and PROFILE TYPE (WM choice)

3/A) Model NINFA 106 profile size of 74x111 mm (2.91"x 4.37") + CerStrong panel up to a height of 1200mm (47,24"), resistant to class C2 (137 lb/ft). Suitable for Top-mounted installation.

3/B) Ninfa 116 profile with dimensions 122 mm x 114 mm (4.80"x 4.48") + CerStrong panel up to a height of 1200 mm, resistant to class C2 (137 lb/ft). Suitable for Edge-mounted balustrade flush with the outer face of the wall.

3/C) Ninfa 176 profile with dimensions 80mm x 173mm (3.14"x 6.81") + CerStrong panel up to a height of 1200mm (47,24"), resistant to class C2 (137 lb/ft). Suitable for mounting on the inner side of a reinforced concrete base.

3/D) Ninfa profile 186 with dimensions 80 mm x 173 mm (3.14"x 6.81") + CerStrong panel up to a height of 1200 mm (47,24"), resistant to class C2 (137 lb/ft). Suitable for Fascia-mounted laying on the face of the floor beam.

The Designer or the Works Manager reserve the right to request the strength test of the balustrade directly on site in accordance with UNI 11678-2017, to check its compliance and also the validity of the fixing of the balustrade in place.

"CerStrong- Triple slab panel and profile type NINFA series 6, (or similar)"

1. MATERIALS AND COMPONENTS:

- Balustrades (Balustrades - Railings), made of extruded aluminium alloy 6063 T66 profiles, Anodised in accordance with the Qualanod mark or Painted with polyester powder in accordance with the Qualicoat mark. The profiles are only positioned at the base of the balustrade. The profile must be suitable for an infill panel of ~25 mm (1") thickness. The internal geometry of the profiles is specially engineered to provide both the stiffness in the case of static load test and the flexibility to absorb accidental impacts in accordance with Uni 11678-2017.
- The accessories: the CerStrong panel mounted with adjustable and suitable accessories for plumbing the panels and clamping them.
- Test certificates: the balustrade must be laboratory tested in accordance with UNI 11678-2017 and in compliance with the purpose, i.e. for Class C2 (137 lb/ft) (residential or similar) or Class C3 (206 lb/ft) (spaces susceptible to crowding) in accordance with MD 2018.

2. FEATURES OF THE 'CerStrong - Triple slab' PANEL:

Panel consisting of tempered glass - layered with two LAMINAM panels (external-internal sides), for a total thickness of ~25 mm (1").
Description of Laminam: laminated porcelain obtained by wet milling of clayey raw materials, granitic and metamorphic rocks with a feldspathic component and ceramic pigments.
Compacted by special sintering moulding at 1200° with hybrid firing .

3. INSTALLATION POSITIONS and PROFILE TYPE: (WM choice)

3/A) Ninfa 6 profile with dimensions 86mm x 136mm (3.38"x 5.35") + CerStrong panel up to a height of 1200mm (47,24"), resistant to class C3 (206 lb/ft). Suitable for Top-mounted installation.

3/B) Ninfa profile 176 with dimensions 80 mm x 173 mm (3.14"x 6.81") + CerStrong panel up to a height of 1300 mm, resistant to class C2. Suitable for mounting on the inner side of a reinforced concrete base.

3/C) Ninfa 186 profile with dimensions 80mm x 173mm (3.14"x 6.81") + CerStrong panel up to a height of 1300mm, resistant to class C2. Suitable for laying on the face of the floor beam.

The Designer or the Works Manager reserve the right to request the strength test of the balustrade directly on site in accordance with UNI 11678-2017, to check its compliance and also the validity of the fixing of the balustrade in place.

GENERAL TERMS AND CONDITIONS OF SALE

Transportation costs shall be evaluated with every offer, according to volume weight and destination.

COMPLAINTS:

Any complaint must be sent to Faraone within a final deadline of 8 days from receipt of goods; we do not accept returned goods unless previously authorized by Faraone in carriage collect.

Any returned products that should hypothetically arrive to the Faraone company without prior authorization will be refused without exception and returned to the sender in carriage collect.

PAYMENT METHOD:

For foreign countries, the payment of the goods is made by bank transfer in advance. Other payment methods will be agreed under the credit insurance.

- **VAT:** all prices listed in the pricelists are exclusive of VAT.

Note: As our products are subject to continuous innovation and improvement, design and construction features are subject to change without prior notice. The images in the production catalogues are purely indicative, therefore our company reserves the right to make improvements to the products without any prior notice. All models and designs are exclusive property of Faraone. No reproduction permitted. All prices are exclusive of VAT, transport and installation.

faraone[®]



faraone.it